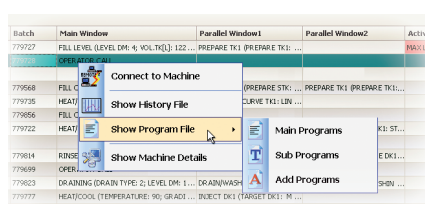
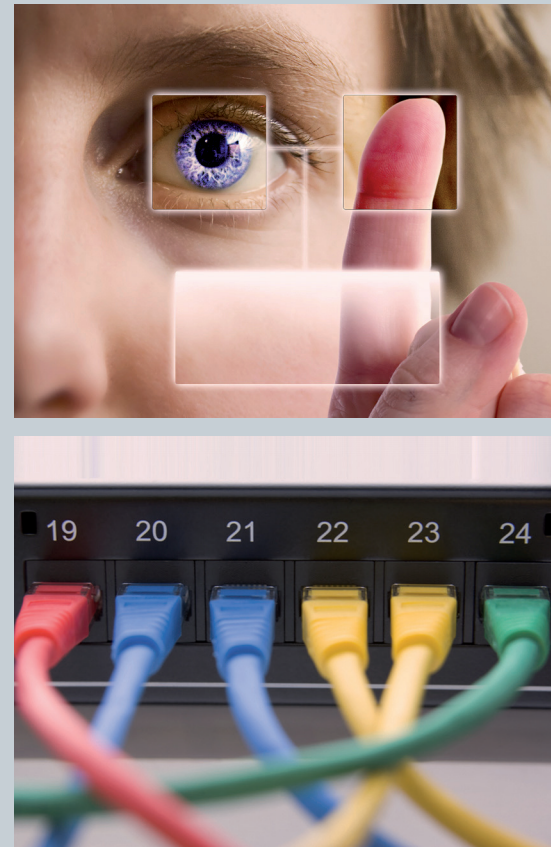
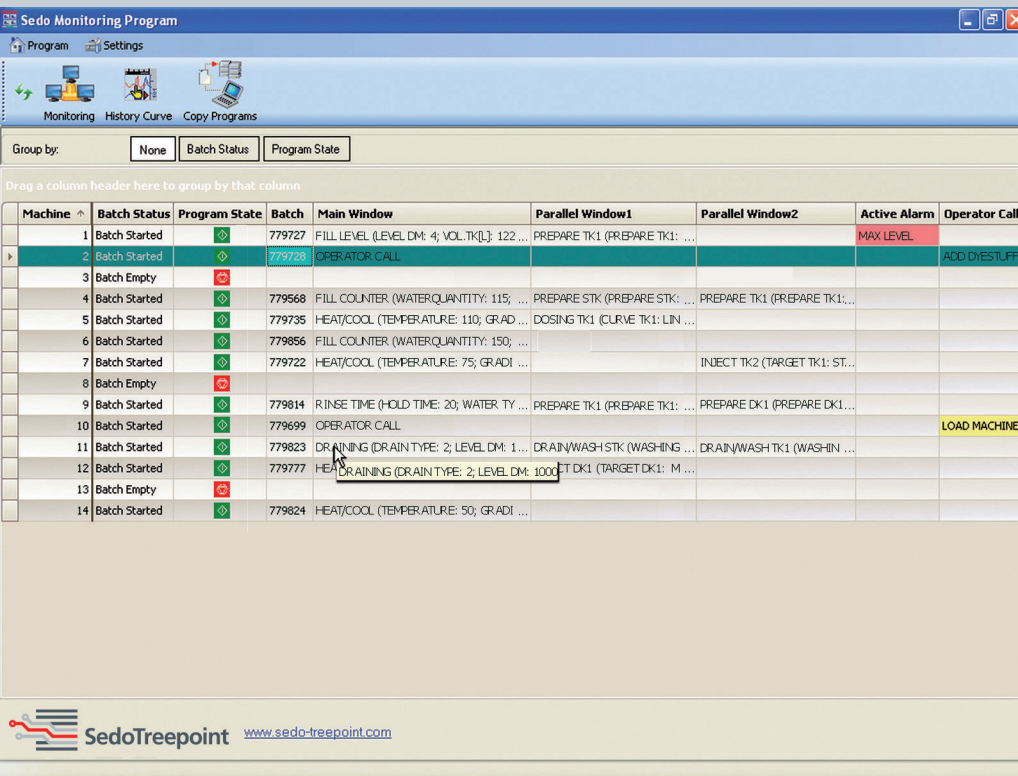


Entry-level system for central process control



Right-click machine for more options




Monitoring view

SedoMonitor is an entry level system for monitoring, administering, supervising and controlling machines equipped with Sedomat touch screen controllers from your desk.


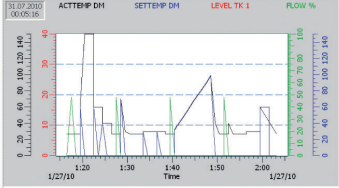
SedoMonitor will simplify your work. At a glance you will get an overview of all machines with details like batch status, program state, active batch, active functions, alarms and operator calls. You can sort/group by different criteria, view multiple alarms or show additional information in tool tips. Consult your history data including trend graph and all details. View or edit processes, treatments and additional programs. At the push of a button you can print this information, export it to different formats (e.g. PDF, Excel, ...) or send it by Email.

SedoMonitor supports backup of process and history files for future reference and ISO 900x certification. From your desk you can work remotely on the Sedomat controllers as though you were in front of the machine e.g. start/stop/change programs, confirm alarms and operator calls, etc.

Improve your workflow

Program Print				
				
Program Data Program Number: 1289 Short Name: REACTIVE Comment: DYING				
Step	Window	Window	Window	Window
1	CIRCULATION (M, S, S)	PUMP/COOLER (M, S)	Signal Prod. (S, I)	Signal Prod. (S, I)
2			Call Prod. (S)	
3			Call Prod. (S)	
4			Call Prod. (S)	
5	CIRCULATION (M, S, S)		Call Prod. (S)	
6			Call Prod. (S)	
7			Call Prod. (S)	
8	CIRCULATION (M, S, S)			
9	DRAINING (DRAIN, I, S)			
10	PROG RETURN (I)			

Program printout

Batch Logging Print				
				
Batch Data: Batch: 793021 Production Id: 793024 Program Number: 20001 Start Time: 27.01.2010 01:16 End Time: 27.01.2010 02:03				
				
Batch Text: Name: Value: ARTICLE: 793021 BATCH: 793021 MACHINE: 1298 CUSTOMER:				
Batch Parameter: Name: Value: LOAD (KG): 0 LOAD RATIO: 9 ARTICLE GRP: CORD (20%) RED. VOLUME: 5 LOAD (KG): 50.0				
Event Logging: Time: Step: Window: Info: Event: Date: 27.01.2010 Page 1 of 7				

Logging printout

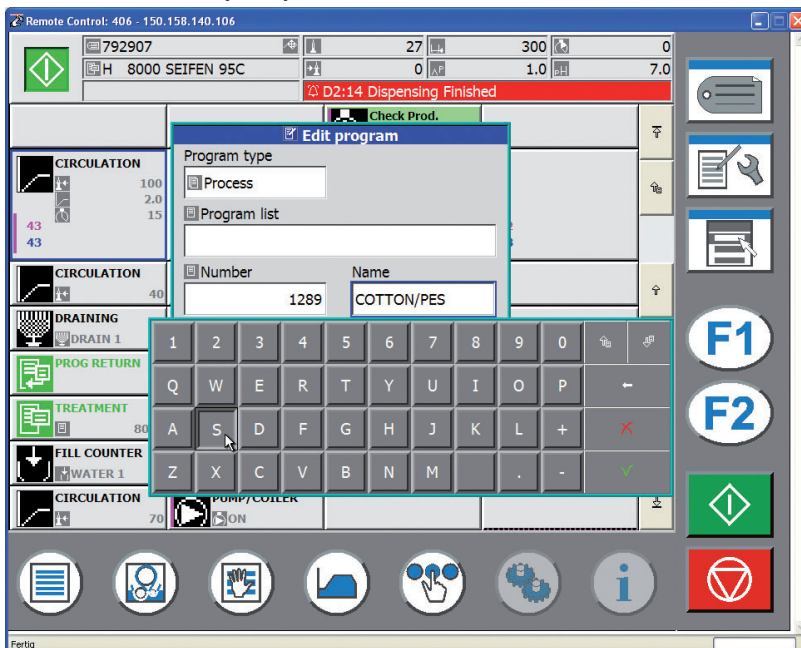
Features:

- Real time status view: Machine status, active functions, alarms and operator calls.
- Full remote control of connected Sedomat controllers, e.g. change functions, view/cancel alarms, start/stop/halt program, etc.
- Edit programs.
- For security reasons a backup of programs is possible.
- Automatic backup of history data via FTP (needed for ISO900x certification).
- Printout of history data.
- Printout of programs.
- Copy programs from and to controllers.
- Show machine details (machine number, IP-address, controller type, software version, etc.)

Benefits:

- Self-explaining, easy to use and to install.
- All information available at your desk. Operate and control your machine without leaving your office.
- Distribute programs via Ethernet to different machines.
- Can be used for all Sedomat touch screen controllers.
- Automatic backup of history data via FTP.
- Scalable: can be used for one to an unlimited number of machines.
- Remote service and diagnostics can be carried out.
- No separate workstation or server needed.

Work remotely with your Sedomat:



Head office:
Sedo Treepoint GmbH, Germany
 Neuwies 1, D-35794 Mengerskirchen
 Phone: + 49 6476 31-0
sedo@sedo-treepoint.com

Sedo Treepoint, Switzerland
switzerland@sedo-treepoint.com

Sedo Treepoint, Belgium
belgium@sedo-treepoint.com

Sedo Treepoint, China
china@sedo-treepoint.com

Sedo Treepoint, India
india@sedo-treepoint.com

Sedo Treepoint, Singapore
singapore@sedo-treepoint.com

Sedo Treepoint, USA
usa@sedo-treepoint.com

Technical specifications are subject to change without prior notice.

