

Expert system for managing your textile plant



SedoExpert

SedoExpert represents an advanced, AI-enhanced solution for production planning system (PPS) designed for the complex needs of modern textile operations. It enables seamless, automated workflows and full supply chain integration, improving efficiency, responsiveness and decision-making.



The platform unifies key production functions from customer order management, shopfloor order batching, automated planning (TMS/APS), work in progress (WIP tracking), management information system (MIS) and business intelligence. Integrated with MES like SedoMaster and expert systems such as ColorMaster and EnergyMaster, SedoExpert provides a transparent, cohesive solution that boosts quality and productivity while reducing costs and resource use.



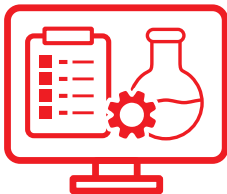
Overview



Customer order management covers the complete end-to-end process of handling customer orders. By streamlining order workflows and integrating them with broader production systems, customers enhance responsiveness, reduce errors and deliver consistent value to their clients.



Production order management, routing and process setting management ensures smooth coordination across manufacturing workflows. This function is critical for ensuring timely, cost-effective production, delivering high-quality goods, and maintaining customer satisfaction.



Lab and operation management ensures labs and businesses run smoothly, efficiently and safely. The principles of process optimization, quality control, resource management and continuous improvement are central to both. Effective management in these areas leads to enhanced productivity, quality and overall organizational success.



Textile manufacturing simulation (TMS) is a shop floor planning tool featuring automatic planning and interfaces to ERP and MES systems. It is developed to create the most efficient production schedule for all active production orders.



Traceability, trolley management and WIP are essential for maintaining visibility and control across the production process. These functions support real-time monitoring, optimize material flow and ensure timely execution of manufacturing tasks.



Management information system (MIS) supports efficient operations through structured data management, while **Business Intelligence** transforms this data into actionable insights to guide strategic decision-making.



The **PrintMaster** expert system enhances process efficiency in your printing operations through tools for recipe management, design combinations, rest paste handling and new product development.

Applications

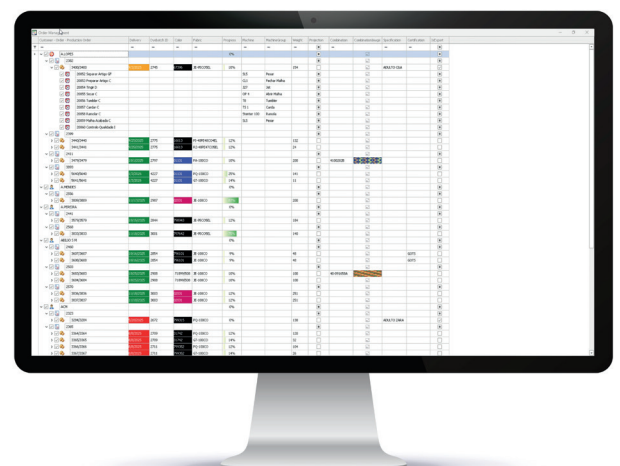


Overview core functionalities and optional features

Customer orders management

- Requests, quotations, order receipts
- Order execution monitoring
- Supply chain management

This module embodies key operational functions including request handling, quotation processing, order receipt, execution follow-up and supply chain coordination. Its seamless integration with the ERP system ensures comprehensive access to all necessary data, enabling efficient and effective customer order management.

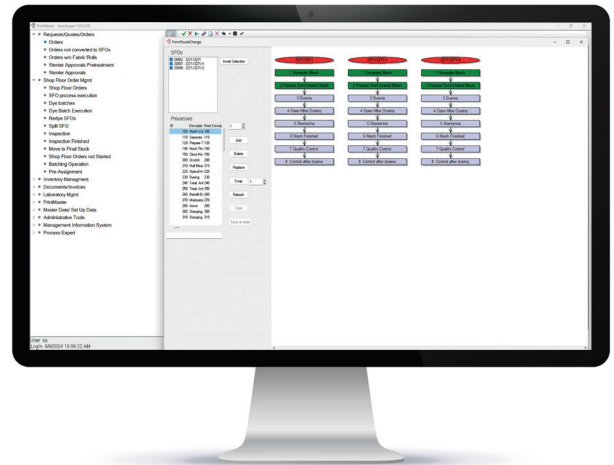


Customer order overview

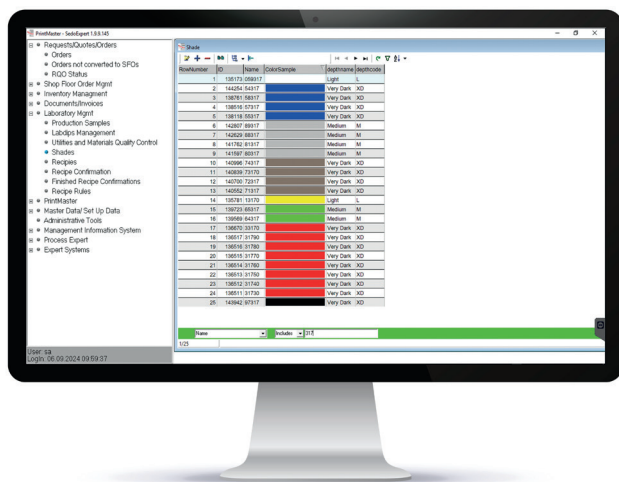
Production orders management

- Production order creation
- Planning, batching and routing
- Order execution
- Re-process-management
- Process settings management
- Quality management

SedoExpert optimizes production efficiency by intelligently grouping similar orders and assigning them to the most suitable production path. Through advanced batching, it minimizes machine changeovers, while dynamic routing ensures each order follows the most efficient trajectory across the production line.



Production route of order



Overview lab management

Lab management

- Lab samples and dips management
- Incoming materials control
- Lab tasks management
- Recipes management

With the Lab Management module, the laboratory becomes a hub of efficiency and accuracy, where its easy to manage lab samples, dips and incoming material checks in one system. Coordinate lab tasks seamlessly and maintain full control over recipe development and adjustments.

Traceability, Trolley management and WIP

Every fabric roll is fully traceable from receipt of goods to final production. Trolleys and material carriers are guided in real time to the appropriate machines, ensuring efficient flow throughout the facility. Real-time order tracking provides full visibility into production stages, enabling proactive process management, early bottleneck detection, and reduced downtime.



Work in progress (WIP)

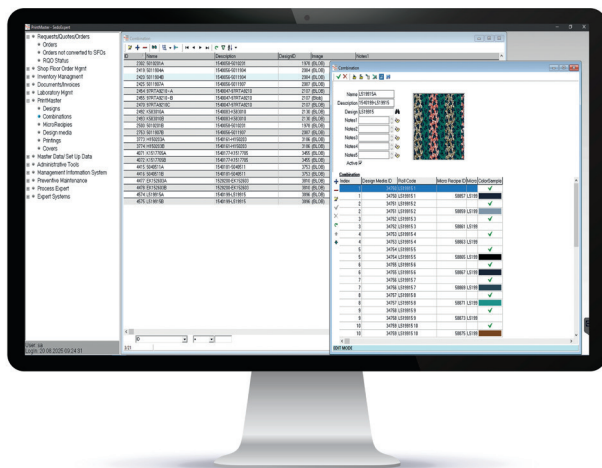
TMS

- Automatic planning simulation
- Interactive graphical planboard
- Planning rules editor
- Order meets delivery date
- Optimized machine utilization
- Ressources optimization and costs reduction
- Enhanced quality

TMS serves as an interactive planning board, enabling users to evaluate various scheduling scenarios and make real-time adjustments to proposed plans. Additionally, the ability to filter by individual SFOs for status updates or by specific machines for utilization insights provides valuable support for operational decision-making.



Dyebatch planning and monitoring



PrintMaster module

PrintMaster

- Management of design specific data
- Manage combinations, recipes and settings
- Organize and manage screens, rolls and more
- Printing paste and rest paste management
- Detailed costing, designs libraries for customer purposes and more

PrintMaster streamlines modern printing operations with end-to-end workflow management from design and color labs to screen preparation, sampling and final production ensuring efficiency and seamless coordination.

MIS

- Real-time visibility into production data
- Early detection of inefficiencies and bottlenecks
- Organize and manage screens, rolls and more
- Data-driven decision support

Centralizing and structuring operational data across the production environment, MIS provides insights to optimize processes, reduce waste and make smarter decisions.



MIS reporting

Connect with machine level

SedoExpert can be interfaced with individual machines via Sedomat controllers which ensure data exchange between the MES and the machine components:

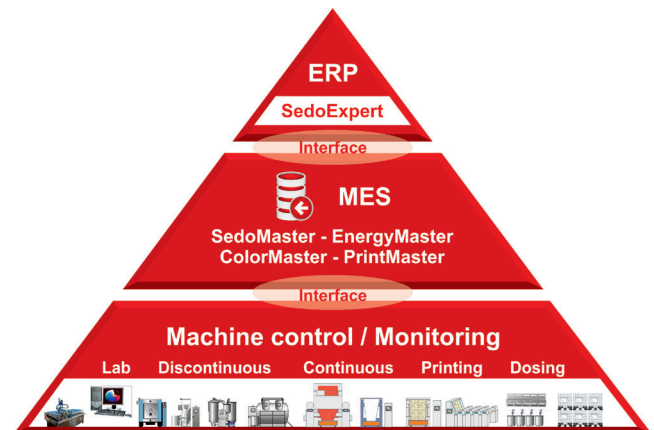
1. In the production, the operator scans the production order.
2. Automatic download of process data to the machine PLC (Sedomat).
3. When production starts, the Sedomat monitors and controls execution.
4. SedoExpert, SedoMaster and the planning module are updated with execution data.

Integration possibilities to existing ERP systems

SedoExpert can be linked to existing ERP systems in order to avoid redundant work and large-scale re-organization of an operation.



Integration of Planning Module to Production Process



Production optimization with MES closes the gap between ERP and machines.

Why Sedo Treepoint?

- Nearly 50 years of experience in the textile industry
- 24/7 worldwide support
- We convert your data into valuable information.

Head office:
Sedo Treepoint GmbH, Germany
 Neuwies 1, D-35794 Mengerskirchen
 Phone: + 49 6476 31-0
sedo@sedo-treepoint.com

Technical specifications are subject to change without prior notice.
08/25

