

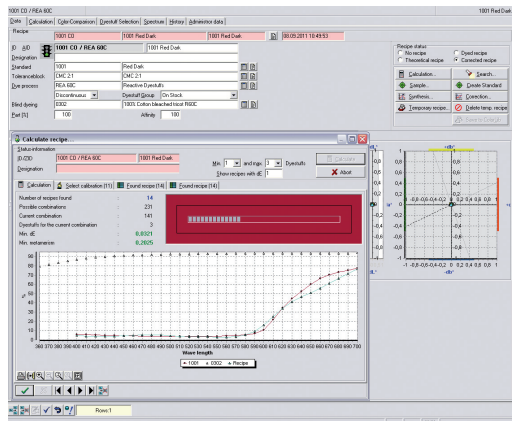
## Dyestuff recipe calculation



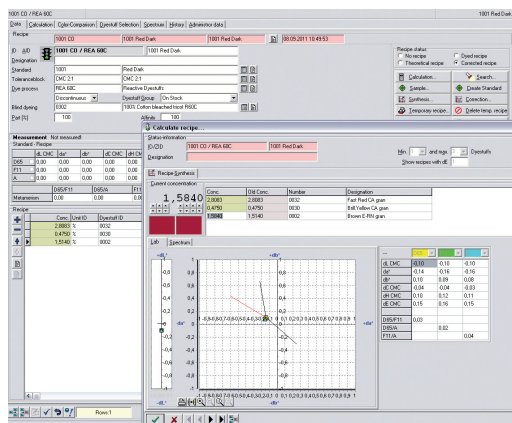
The Prisma recipe calculation system provides advanced colorimetric color matching. Recipes can be quickly and easily calculated, optimized, corrected and stored in a clear, easy-to-use recipe database.

Prisma is a part of the Sedo Treepoint product family and can therefore easily be connected to one or several other systems of the Sedo Treepoint product family. The system can be installed as Client-Server network application.

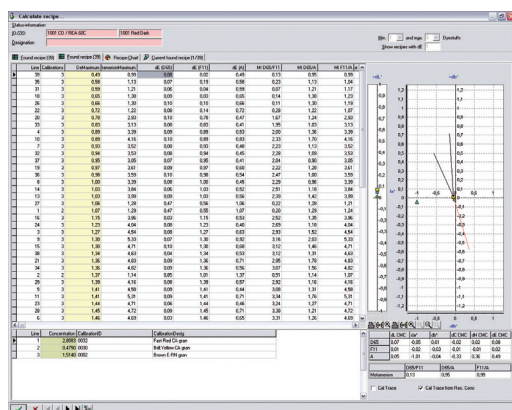
## Dyestuff recipe calculation



Create a new job



Recipe synthesis



Available recipes

### Typical Prisma applications:

- Prediction of exhaust, continuous and print recipes.
- Intelligent color matching based on proven recipes.
- Grouping of dyestuff according to fastness and dyeing behavior allows quick and systematic dyestuff selection.
- Selection of calculated recipe according to criteria, e.g. color difference, metamerism, price etc.
- Computer simulation of the dyeing process allows optimization of recipe.
- Formula correction and additions are possible in the laboratory and production areas.
- A powerful database manages proven recipes for laboratory and production.
- Manual input of existing recipes. Measure or import dyestuff data.
- Graphical and numerical dyestuff analysis.
- Integration of key systems, e.g. host systems, laboratory dosing systems, production management systems and color quality control.

### Advantages of Prisma:

Time- and cost savings by reduced recipe costs, fewer lab dyeings, improved lab-production transfer, fewer additions in production.

Quality improvement by optimized recipes with good dyeing behavior, quick and objective PASS/FAIL decisions, optimized dyeing process.

More flexibility and efficiency by precise and easy to use color matching, adjust to variety of substrates, quick conversion to new dyestuffs, improvement of color communication with customer.

Head office:  
**Sedo Treepoint GmbH, Germany**  
 Neuwies 1, D-35794 Mengerskirchen  
 Phone: + 49 6476 31-0  
[sedo@sedo-treepoint.com](mailto:sedo@sedo-treepoint.com)

Sedo Treepoint, Switzerland  
[switzerland@sedo-treepoint.com](mailto:switzerland@sedo-treepoint.com)

Sedo Treepoint, Belgium  
[belgium@sedo-treepoint.com](mailto:belgium@sedo-treepoint.com)

Sedo Treepoint, China  
[china@sedo-treepoint.com](mailto:china@sedo-treepoint.com)

Sedo Treepoint, India  
[india@sedo-treepoint.com](mailto:india@sedo-treepoint.com)

Sedo Treepoint, Singapore  
[singapore@sedo-treepoint.com](mailto:singapore@sedo-treepoint.com)

Sedo Treepoint, USA  
[usa@sedo-treepoint.com](mailto:usa@sedo-treepoint.com)

Technical specifications are subject to change without prior notice.



**SedoTreepoint**

Experts in process optimization